

# VAG TWINJET-S Automatic air valve

Double chamber version  
Twinjet incl. shut-off-valve



Water

PN 10...25  
DN 50...200



## Product features

- Double chamber air valve with ball floats directly operated by the medium
- Two orifices
  - large orifice for outlet and intake of large air volumes on start and trip, respectively, of pumps
  - small orifice for air release during service; air discharge volume can be increased by integrated, manually adjustable control valve
- Incl. shut-off-valve as lugged type butterfly valve type INTEREX-L
- With handlever
- Assembled together with screws of stainless steel

## Materials

- Body cover of ductile cast iron EN - JS 1030 (GGG-40)
- Inner parts of plastic
- Sealings of EPDM

## Corrosion protection

- Epoxy powder coating (EP-P) inside and outside

## Field of application

- Permitted operation temperature for neutral fluids: 50°C
- Minimum pressure for sealing of venting transverse sections: 0,3 bar
- For plants and valve chambers
- For pressure of 0,1....1 bar special sealing

## Field of application Water

## Pressure test in acc. with EN 12266

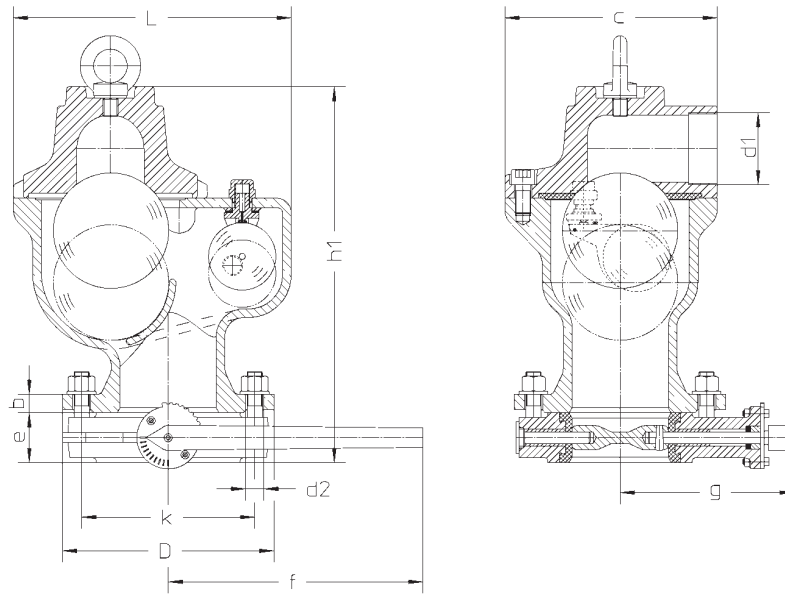
DN	PN	Permitted operating over-pressure	Permitted operating temperature for neutral liquids °C	Test pressure in bar with water in the body with water in the outflow
mm	bar	bar		
200	10	10	50	15
50...200	16	16	50	24
50...200	25	25	50	37.5

Minimum pressure for the seal = 0.3 bar

For operating pressure 0.1...0.1 bar



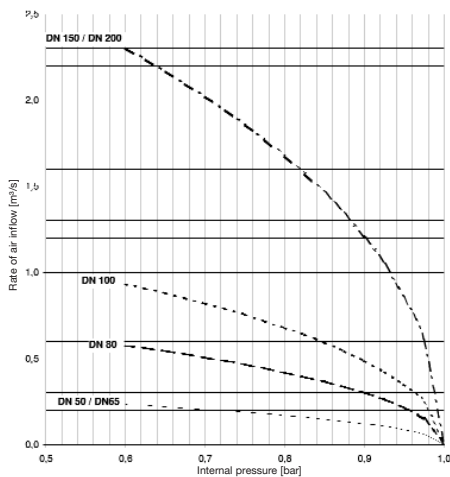
## Dimensions / weights



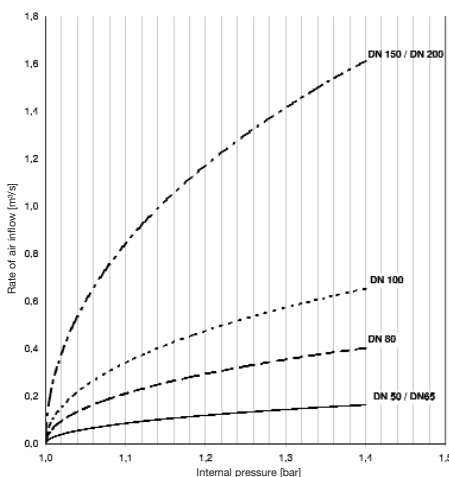
Dimensions in mm		DN	50	65	80	100	150	200
<b>Nominal diameter</b>		<b>DN</b>	<b>50</b>	<b>65</b>	<b>80</b>	<b>100</b>	<b>150</b>	<b>200</b>
Construction dimensions		c	156	156	185	202	260	260
		d <sub>1</sub>	R 1 1/4"	R 1 1/4"	G 2	R 2 1/2"	R 4"	R 4"
		h <sub>1</sub>	308	511	360	391	578	582
		L	231	231	255.5	289	391	391
		e	43	46	46	52	56	60
		f	265	265	265	265	375	375
		g	143	151	158	176	209	233
Net weight	kg		14,4	16,5	21,0	25,8	53,	60,5
Space req.	m <sup>3</sup>		0,0096	0,0096	0,016	0,0198	0,053	0,053
Flange dimensions acc. with EN1092-2	PN 10	D	165	185	200	220	285	340
		k	125	145	160	180	240	295
		No. of holes	4	8	8	8	8	8
		D <sub>2</sub>	19	19	19	19	22	22
	PN 16	b	19	19	19	19	19	20
		D	165	185	200	220	285	340
		k	125	145	160	180	240	295
		No. of holes	4	8	8	8	8	12
	PN 25	D <sub>2</sub>	19	19	19	19	22	22
		b	19	19	19	19	19	20
		D	165	185	200	235	300	360
		k	125	145	180	190	250	310
PN 25	No. of holes	4	8	8	8	8	12	
	D <sub>2</sub>	19	19	19	22	26	26	
	b	19	19	19	19	20	22	

## Venting quantity

Large orifice Venting



Large orifice Air release



Small venting cross section

