

# VAG EROX®-Sluice Gate Valve

with round cross-section  
for wall plugging



## Sewage Water

DN 150...2200



### Product Features

- Leak proof on both sides up to 6 m WC
- Compact design
  - easy and quick installation with few anchor bolts
  - the doveled-on Sluice Gate Valve is ready for use after installation
- Self-supporting frame structure
- No block-outs necessary
- Fully rubber lined sealing ring for sealing of wall openings
  - sealing replacable without dismantling the Sluice Gate Valve
- Very low operation torques due to PTFE-sliding wedges

### Materials

- Body, frame, gate and stem made of stainless steel 1.4301, alternative 1.4571
- Operating parts of stainless steel/bronze, sewage water resistant
- Sealing ring of EPDM (sewage water resistant), optional NBR

### Corrosion Protection

- All stainless steel parts are bath etched

Observe minimum installation depth!

### Alternatives

- Material 1.4571
- - EROX G: with smooth sole plate passage
- EROX D: stem thread outside of the medium
- EROX R: for throttling
- Special designs for higher pressure rates

### Accessories

- T-key
- Operating sets
- Segment stones for assembly inside of round chamber
- ROTOP portable electric actuator

### Preparing the Wall

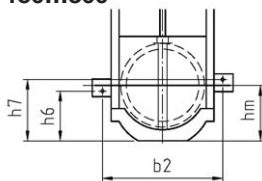
- The wall for the Sluice Gate Valve has to be even and perpendicular. The tolerances according to DIN 18202, edition May 1986, have to be observed as follows:
  - table 1 = limited dimensions line 6
  - table 2 = angular tolerances line 1
  - table 3 = planar tolerances line 7
 The wall has to be plane with a tolerance max.5 mm. In the sealing area the wall surface must be smooth and non-porous.

### Field of Application

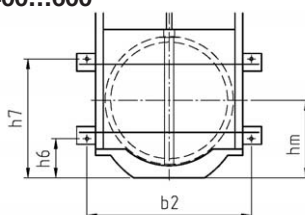
- Water and sewage treatment plants
- Flood protection
- For high leak proof requirements up to 6 m WC (drop-tight), for example DN 1200 max. 0,0013 l/min.

### Wall plug arrangements

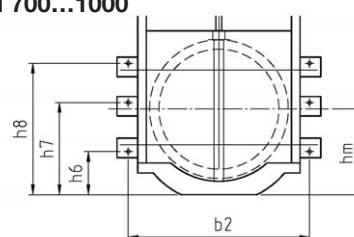
DN 150...300



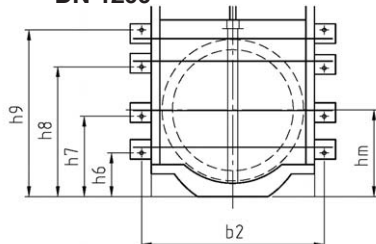
DN 400...600



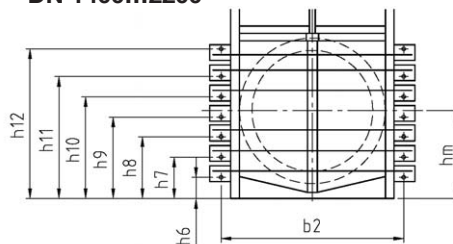
DN 700...1000



DN 1200



DN 1400...2200



### Field of Use

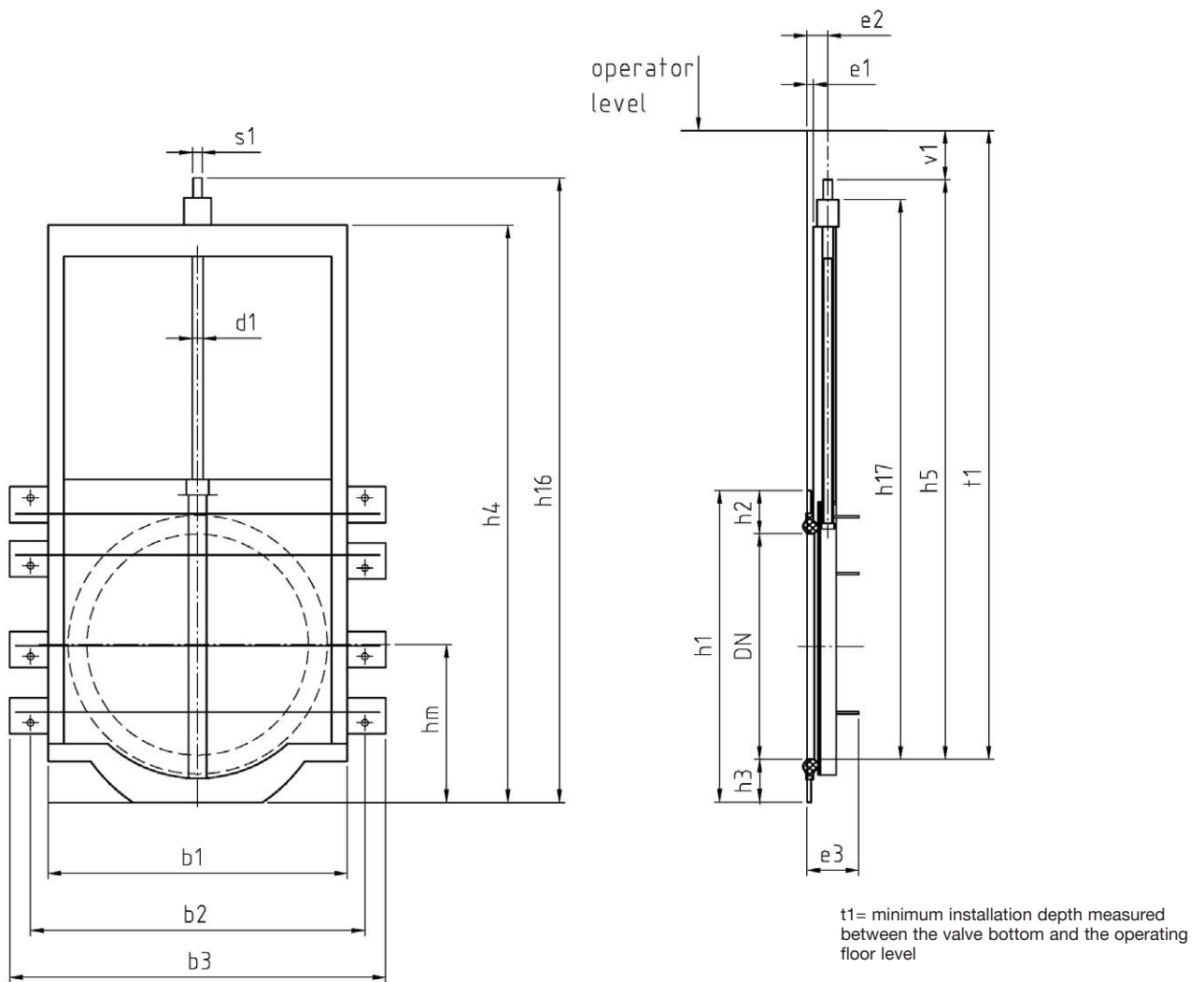
### Final Inspection Tests in acc. with EN 12266-2, Tab. A.5, leak rate C

DN mm	Max. operating pressure on both sides bar	Max. operating temperature for liquids °C	Seat test pressure with water bar
150...2200	0.6 (6m WC)	50	0.6

We reserve the right to make technical changes and use similar or higher-quality materials. Drawings are non-binding



## Dimensions/weights

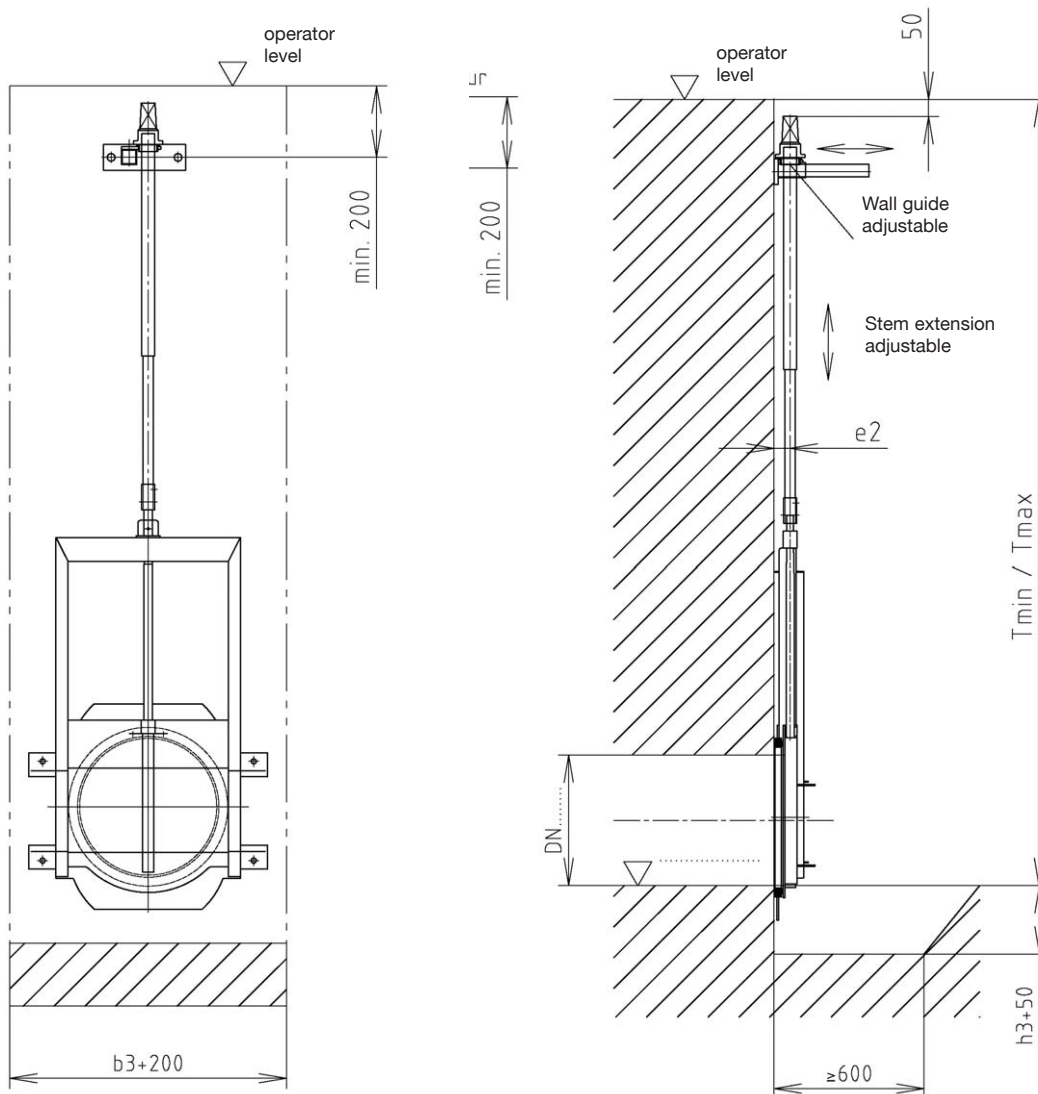


Dimensions in mm																				
DN	150	200	250	300	400	500	600	700	800	900	1000	1200	1400	1500	1600	1800	2000	2200		
b1	288	338	388	438	538	638	738	904	1004	1104	1204	1404	1750	1850	2000	2150	2350	2550		
b2	366	416	466	516	616	716	816	982	1082	1182	1282	1482	1846	1946	2096	2246	2446	2646		
b3	446	496	546	596	696	796	896	1138	1238	1338	1438	1638	2062	2162	2312	2462	2662	2862		
d1	Tr 24x5-LH				Tr 36x5-LH				Tr 48x8-LH				Tr 60x9-LH				Tr 70x10-LH			
e1	32				52				80				100				120			
e2	47				72				100				120				140			
e3 ca.	100				120				170	180	205	210	240	350				450	500	
hm	145	170	195	220	300	350	400	450	500	550	600	700	892	942	1017	1092	1192	1292		
h1	290	340	390	440	600	700	800	900	1000	1100	1200	1430	1762	1862	2012	2162	2362	2562		
h2	70				100				130				170							
h3	70				100				192											
h4	555	655	755	855	1085	1285	1505	1754	1954	2163	2363	2766	3468	3668	3948	4325	4745	5145		
h5	582	682	782	882	1082	1282	1502	1778	1978	2187	2387	2790	3452	3652	3932	4654	4774	5174		
h6	119	144	169	194	142	177	202	178	193	193	208	238	342	362	392	77	87	87		
h7	171	196	221	246	432	537	633	478	528	593	643	658	597	630	682	402	442	542		
h8								748	838	943	1033	1100	852	902	977	727	797	897		
h9												1386	1112	1175	1272	1052	1152	1252		
h10													1372	1450	1567	1387	1512	1612		
h11													1687	1785	1932	1722	1872	1972		
h12																2087	2287	2487		
h16	652	752	852	952	1182	1382	1602	1878	2078	2287	2504	2890	3644	3844	4124	4546	4966	5366		
h17	485	585	685	785	985	1185	1405	1654	1854	2063	2263	2666	3276	3476	3756	4133	4553	4953		
s1	□ 16				□ 26				□ 30				□ 40							
t1	687	787	887	987	1187	1387	1607	1893	2093	2302	2502	2905	3617	3817	4097	4519	4939	5339		
v1	105				115				165											
No. of holes	2 x Ø 15				4 x Ø 15				6 x Ø 15		6 x Ø 26		8 x Ø 26		12 x Ø 30				14 x Ø 36	
Turns/stroke	40	51	61	72	92	112	132	153	173	195	216	256	192	200	223	210	235	226		
Net weight (kg)	11	13	15	21	33	40	49	103	114	151	164	243	670	750	820	1100	1400	1500		
Volume req.	0.03	0.037	0.047	0.057	0.099	0.132	0.172	0.363	0.462	0.632	0.756	1.148	2.229	2.900	3.028	5.100	5.900	7.700		

We reserve the right to make technical changes and use similar or higher-quality materials. Drawings are non-binding



**Installation Information**

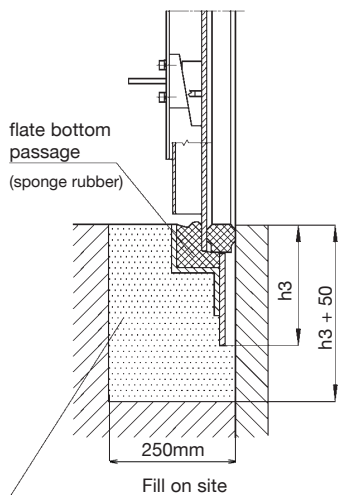


(Additional wall guides may be required in case of deep installation depths)

State installation depth "T" when ordering (measured between the valve bottom and the operating floor level)

**Alternatives**

**Version „G“**



**Possible variants**

- Version „R“ for throttling
- Version „G“ with flate bottom

For information about installation, commissioning, operating and maintenance we kindly refer to **KAT 2412-B**.