



Size 200x200 –  
2000x2000, PN 0.6 bar



### Product Features

- Compact design
  - easy and quick installation with few anchor bolts
  - the doweled-on Sluice Gate Valve is ready for use after installation
- Leak proof on both sides up to 6 m WC
- Self-supporting frame structure
- No block outs necessary
- Fully rubber lined sealing ring for sealing of wall openings
  - sealing replacable without dismantling the Sluice Gate Valve
- Very low operation torques due to PTFE-sliding wedges

### Materials

- Body, frame, gate and stem made of stainless steel 1.4301, alternative 1.4571
- Operating parts of stainless steel/bronze, sewage water resistant
- Sealing ring of EPDM (sewage water resistant), optional NBR

### Corrosion Protection

- All stainless steel parts are bath etched

### Preparing the Wall

- The wall for the Sluice Gate Valve has to be even and perpendicular. The tolerances according to DIN 18202, edition May 1986, have to be observed as follows:
  - table 1 = limited dimensions line 6
  - table 2 = angular tolerances line 1
  - table 3 = planar tolerances line 7
 The wall has to be plane with a tolerance max.5 mm. In the sealing area the wall surface must be smooth and non-porous.

### Field of Application

- Water and sewage treatment plans
- Flood protection
- For high leak proof requirements up to 6 m WC (drop-tight), for example DN 1200 max. 0,0012 l/min.

### Alternatives

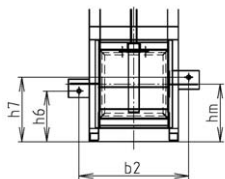
- Material 1.4571
- - EROX G: with smooth sole plate passage
- - EROX D: stem thread outside of the medium
- - EROX R: for throttling
- special designs for higher pressure rates

### Accessories

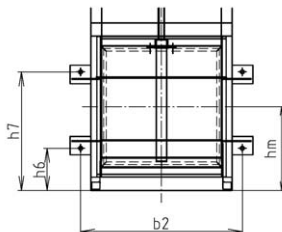
- T-key
  - Operating sets 1-8
  - Segment stones for assembly inside of round chamber
  - ROTOP portable electric actuator
- Observe minimum installation depth!**

### Wall plug arrangements

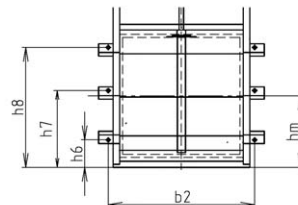
200x200...300x300



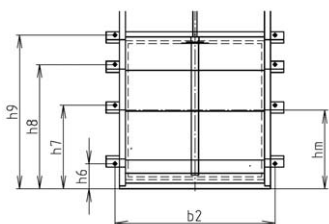
400x400...600x600



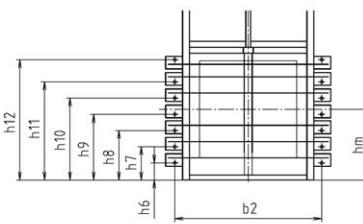
700x700...1000x1000



1200x1200



1400x1400...2000x2000



### Field of Use

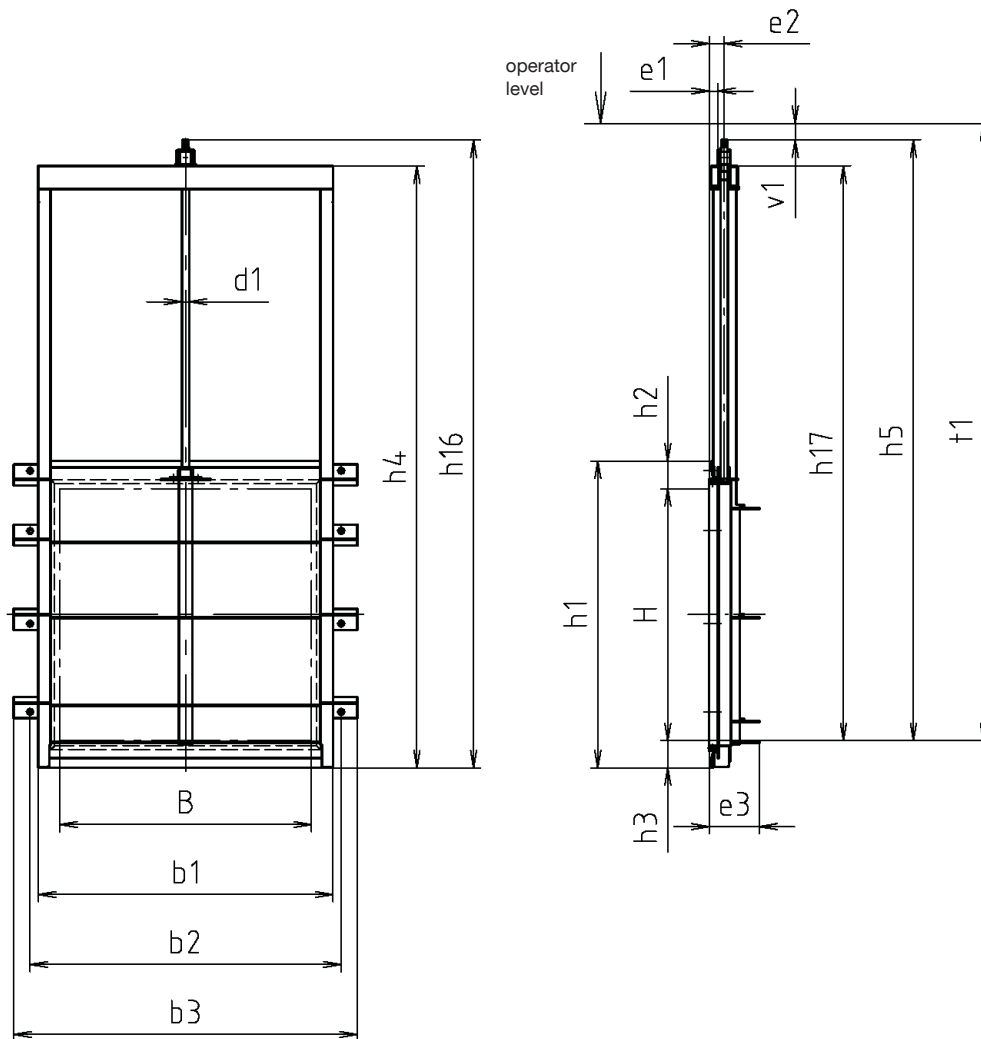
### Final Inspection Tests in acc. with EN 12266-2, Tab. A.5, leak rate C

Size mm	Max. operating over-pressure on both sides bar	Max. operating temperature for liquids °C	Seat test pressure with water bar
200 x 200 ... 2000 x 2000	0.6 (6m WC)	50	0.6

We reserve the right to make technical changes and use similar or higher-quality materials. Drawings are non-binding



## Dimensions/weights

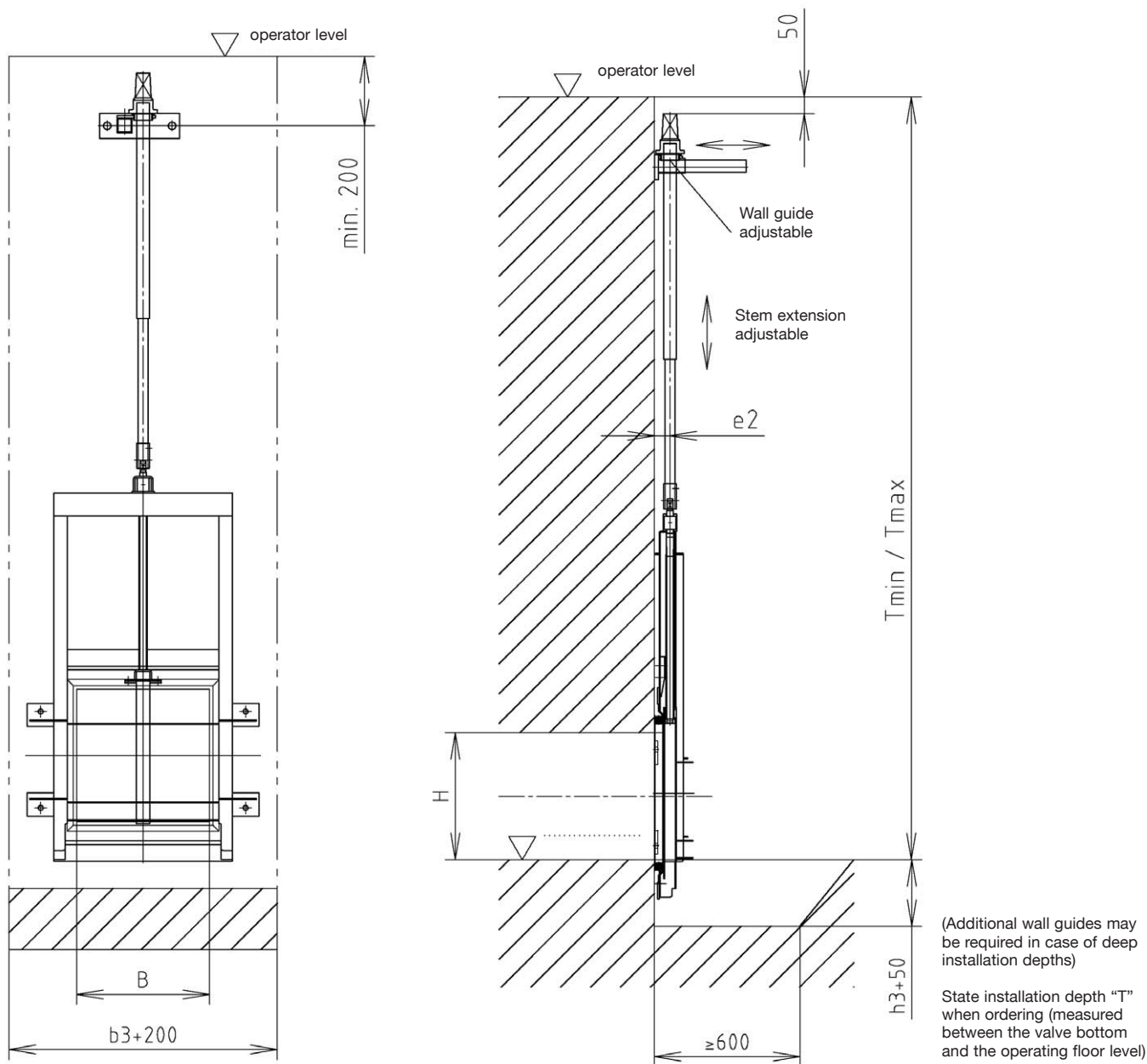


Dimensions in mm																
Size	200x200	300x300	400x400	500x500	600x600	700x700	800x800	900x900	1000x1000	1200x1200	1400x1400	1500x1500	1600x1600	1800x1800	2000x2000	
b1	338	438	538	638	738	904	1004	1104	1204	1404	1750	1850	2000	2150	2350	
b2	416	516	616	716	816	982	1082	1182	1282	1482	1846	1946	2096	2246	2446	
b3	496	596	696	796	896	1138	1238	1338	1438	1638	2062	2162	2312	2462	2662	
d1	Tr 24x5-LH					Tr 36x5-LH					Tr 48x8-LH			Tr 60x9-LH		
e1	32					52					80			100		
e2	47					72					100			120		
e3 ca.	100		120			170	180	205	210	240	350			450		
hm	218	268	318	368	418	480	530	580	630	730	892	942	1017	1092	1192	
h1	436	536	636	736	836	962	1062	1162	1262	1462	1762	1862	2012	2162	2362	
h2	118					131					170					
h3	118					131					192					
h4	705	907	1107	1307	1527	1860	2060	2260	2440	2868	3468	3668	3948	4325	4745	
h5	684	886	1086	1286	1506	1854	2055	2254	2434	2863	3452	3652	3932	4354	4774	
h6	192	242	160	195	220	208	223	223	238	268	180	182	182	147	147	
h7	244	296	450	555	651	508	558	623	673	688	422	442	472	402	442	
h8						778	868	973	1063	1130	677	709	762	727	797	
h9										1416	932	982	1057	1052	1152	
h10											1192	1255	1352	1387	1512	
h11											1452	1530	1647	1722	1872	
h12											1687	1785	1932	2087	2287	
h16	802	1004	1204	1404	1624	1985	2185	2385	2565	2994	3644	3844	4124	4546	4966	
h17	587	789	989	1189	1409	1729	1929	2129	2309	2737	3276	3476	3756	4133	4553	
s1	□ 16					□ 26					∅ 30			∅ 40		
t1	789	991	1191	1391	1611	1969	2170	2369	2549	2978	3617	3817	4097	4519	4939	
v1	105					115					165					
No. of holes	2 x ∅ 15		4 x ∅ 15			6 x ∅ 15		6 x ∅ 26		8 x ∅ 26	14 x ∅ 30			14 x ∅ 36		
Turns/stroke	51	72	92	112	132	153	173	195	216	256	192	200	223	210	235	
Net weight (kg)	11	15	33	40	49	103	114	151	164	243	670	750	820	1100	1400	
Volume req. (m³)	0.040	0.066	0.100	0.134	0.175	0.375	0.475	0.646	0.7722	1.172	2.229	2.900	3.028	5.1	5.9	

We reserve the right to make technical changes and use similar or higher-quality materials. Drawings are non-binding

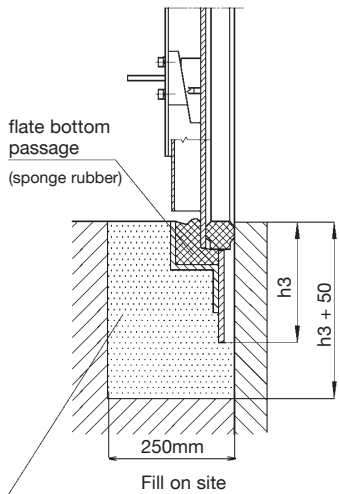


Installation Information



Alternatives

Version „G“



Possible variants

- Version „R“ for throttling
- Version „G“ with flate bottom

For information about installation, commissioning, operating and maintenance we kindly refer to **KAT 2412-B**.